

Five Ponds

White Memorial Foundation
Litchfield, CT

ORIENTEERING MAP and TRAINING COURSE

15 markers are set up in the Five Ponds area of White Memorial Foundation. Each is marked by two red and white rectangles about 5" x 7" attached to opposite sides of a tree

The checkpoints used are placed at the following terrain features:

- | | |
|----------------------------|-----------------------------|
| 1. Boulder, .5m | 9. Cliff, @ foot |
| 2. Stone wall, south end | 10. Top of knoll, south end |
| 3. Boulder, 1m | 11. Top of knoll |
| 4. Top of knoll, east side | 12. Top of small knoll |
| 5. Top of knoll | 13. Boulder |
| 6. Boulder, 1.25m | 14. Stone wall, west end |
| 7. Top of small knoll | 15. Boulder, 3m |
| 8. Marsh, east side | |



4/103

Western Connecticut
Orienteering Club

Maps are available at:

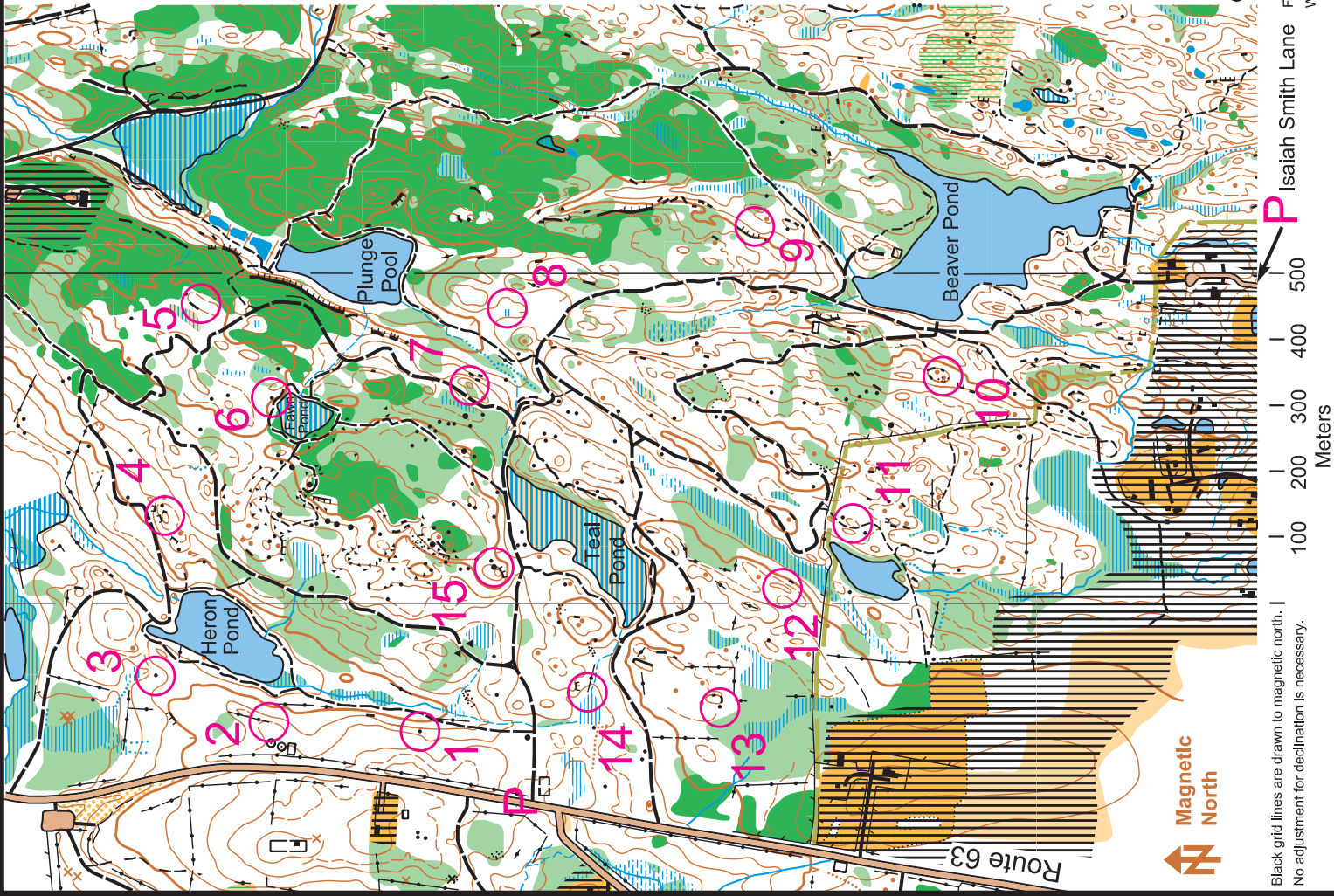
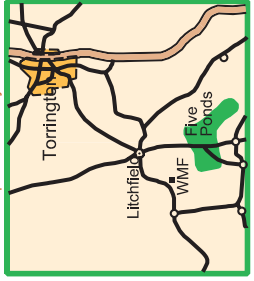
WCOC: www.faculty.fairfield.edu/rdevitt/wcoc

White Memorial Conservation Center, Litchfield, CT (860) 567-0857

scale 1:10000

legend

	paved road		knolls		boulders, cairn		vegetation: slow
	dirt road		depressions		boulder field		vegetation: fight
	vehicle trail		contours (5m)		boulder cluster		undergrowth: slow/fight
	large footpath		form line		stony ground		open land
	small footpath		beaver dam		misc. object		open land-rough/w trees
	indistinct path		dry ditch, rootstock		pit, rocky pit		out of bounds
	narrow ride		narrow marsh		building, ruin		park boundary
	stone wall		diffuse marsh				
	ruined wall		crossable marsh				
	fence		uncrossable marsh				
	uncrossable fence		pond				
	power line		lake				



Magnetic
North

Black grid lines are drawn to magnetic north. No adjustment for declination is necessary.

Isaiah Smith Lane

© copyright 2002 Western Connecticut Orienteering Club. All rights reserved. This map may not be reproduced.

For information about orienteering, contact
WCOC Web site: www.faculty.fairfield.edu/rdevitt/wcoc