

SANCTUARY

Newsletter of the
White Memorial
Conservation Center

Vol. XXVII No. 3
Summer 2009

Museum Hours:

Monday - Saturday 9:00 A.M. - 5:00 P.M.
Sunday 12:00 P.M. - 5:00 P.M.

For Information

Phone: 860-567-0857
E-Mail: info@whitememorialcc.org
Website: www.whitememorialcc.org



Snap Shot: Snapping Turtle
Photo Credit: Leo Kulinski, Jr.

ENERGY CONSERVATION AND ALTERNATIVE ENERGY AT WHITE MEMORIAL

By Keith Cudworth, Executive Director, White Memorial Foundation and Conservation Center

Let's be GREEN, let's use GREEN energy, let's reduce our dependence on FOREIGN OIL, let's reduce our CARBON FOOTPRINT, we can slow CLIMATE CHANGE, we'll save the PLANET, etc, etc. All great buzz words and phrases, but ultimately, it is all about CONSERVATION. I am a forester, a conservationist, and as a conservationist I believe in the wise use of all resources. Whether we drive fuel efficient cars, use compact fluorescent bulbs, or reduce, reuse, or recycle everything we can, the reality is we still need energy.

Hydrocarbon based fuels (oil, coal, natural gas) are still the most energy dense sources available. How can we use these energy sources wisely, and what energy options do we have for the future?

In our homes or businesses, there are numerous ways to make wise use of existing energy sources. Insulating our houses, using energy efficient lighting and appliances, driving fuel efficient vehicles and reducing the number of miles we drive, turning down thermostats in the winter and limiting our dependence on air conditioning in the summer, lowering the temperature of our water heaters, shutting off lighting, computers, etc. when they are not being used and installing geothermal heating and cooling systems are just a few options. Many more suggestions can be found at the web sites listed at the end of this article.

Are these energy conservation options

worth it? The following are a few steps we have taken at White Memorial and the results we have found. In 2006 we replaced the overhead and pedestrian doors at our maintenance garage. After looking at six years worth of data, three years before the change and three after, we found we have reduced the oil needed to heat the building by 400 gallons per year. A 40% reduction! Last year we insulated the hot air ducts and the basement ceiling in another building. I compared the gallons of oil used per day this year to what was used in the winter of 2008 and found that, even though this winter was colder than last, we are using roughly one gallon less per day this year, a 25% reduction. Nine years ago we made changes to the lighting in the Museum and decreased the energy needed to illuminate it by 50%, and recently upgraded office lighting for another 20% savings. Lighting changes made several years ago in the Carriage House also resulted in a 20% reduction in electricity consumption. All these changes were made by installing energy efficient lighting and did not compromise the amount of light.

Although each of these changes have supported White Memorial's mission of CONSERVATION, the bottom line is we require energy, and oil is still king. Like land, however, they aren't making any more of the stuff. Yes, there are substantial supplies still in the ground and

a few more discoveries will likely be made, but the supply is limited and the world's population and energy needs are growing. What are the options for the future? Electricity produced by nuclear energy is a significant part of the current equation and will continue to be in the future, but it has many drawbacks. Hydroelectric is also a significant energy source, (think Niagara Falls), and smaller scale units will become more and more practical. Electricity produced by fuel cells, which is both clean and quiet, has the potential to be a significant source of electricity. Wood is a renewable energy source and used to heat many homes. I use 5 to 7 cords each year. On a larger scale, electricity is produced in wood to energy plants. Individuals who are interested in supporting alternative energy sources can sign up their electricity accounts with the Connecticut Clean Energy Option Program. White Memorial signed up all its accounts with the 100% option with Sterling Planet, two years ago, to help support the production of clean energy.

Two sources of clean energy that are around us on a daily basis, with the potential to provide more of our energy needs in the coming years are Wind and Sunlight. Wind has a great potential, although very site dependent. The best locations in Connecticut tend to be along the shore and atop high ridges in the Northwestern part of the state.

(continued on page 2)

(continued from page 1)

Sunlight, however, is everywhere. If you have an unobstructed south exposure and some solar panels, you have electricity. This is what White Memorial most recently chose to demonstrate.

With the financial support of the Seherr-Thoss Charitable Trust, and working with our contractor, Sunlight Solar Energy, an 11,040 watt photovoltaic solar array was designed and installed on the Activity Shed, located on the south side of the Museum. The electricity this system produces will be used at the Museum. With the potential of producing over 12,800 kilowatt hours (kwh) of electricity each year the system should provide about 28% of the Museum's electricity needs. Activated on March 9th of this year, the system produced 1,350 kwh during it's first month of operation.

The system consists of 48 Sunpower 230 photovoltaic panels on the roof of the Activity Shed, and two Sunpower Inverters in the Shed. The inverters convert the direct current electricity produced by the panels to the alternating current electricity we all use in our

homes. The electricity is then fed into the Museum electrical system. If we produce more electricity than the Museum can use, it will be fed into the Connecticut Light and Power grid. We will essentially be a power generator for the utility.

It is anticipated that this system will reduce our electrical bill by about \$2,600 per year, but CONSERVATION of money and energy are not the only reason for installing the system. Equally important is another tenet of the White Memorial mission: EDUCATION. Last year, White Memorial provided education programs to 7,445 children and adults, and over 7,800 people toured our museum. It is our hope to demonstrate what can be done to conserve energy and promote alternative energy options. These topics are already included in many of our programs, and the solar installation will add to the discussions. Even if you are just out for a walk, you can observe the panels and then read about them on the new display outside of the Activity Shed. I urge you to stop by.

I also urge you to check out the

organizations listed below to learn what you can about energy conservation and alternative energy.

In the future we hope to further our commitment to conserving resources and demonstration of alternative energy systems with the addition of a geothermal heating and cooling system at the Museum and erecting a windmill. Education will be an integral part of all these projects. We hope to serve as a place where people can visit and see the potential of the many ENERGY CONSERVATION and ALTERNATIVE ENERGY options available to them.

[Connecticut Clean Energy Fund](http://www.ctcleanenergy.com)

www.ctcleanenergy.com

[Connecticut Energy Efficiency Fund](http://www.ctsavesenergy.org)

www.ctsavesenergy.org

[Connecticut Light and Power](http://www.cl-p.com/Home/SaveEnergy/default.aspx)

www.cl-p.com/Home/SaveEnergy/default.aspx

[Northwest Conservation District](http://www.nwconvert.org/energy)

www.nwconvert.org/energy

[PACE – People's Action](http://www.pace-cleanenergy.org)

[For Clean Energy](http://www.pace-cleanenergy.org)

www.pace-cleanenergy.org

Make a Difference

In her continuing series, Zo? Greenwood helps you find small ways to help the environment

Okay, it's going to be summer soon. Summer means picnics. Picnics mean paper goods, or do they? You've probably already guessed that my family uses paper goods very rarely. I mean *rarely*. There are still some goods leftover from my son and daughter-in-law's wedding. They will be married five years in August. You shouldn't be surprised that they did a really cool thing for their reception. They live greener than anyone I know. Besides serving only beverages in refillable containers, they used soy-based paper goods that were completely compost-able. When dinner was over, they put all the compost, plates, napkins and all into a big hole and covered it with dirt. Clean-up was a snap! All they had to do was store the food. Daughter-in-law ordered the paper goods online.

We keep a picnic basket all set to go with metal plates, cups, silverware and bowls. It also contains a fabric tablecloth and napkins. Just add food and we are good to go.

Summer also means tag sales and cleaning out the basement. Tag sales are a great way to purchase household goods and even gifts at a greatly reduced price. That makes sense in these economic times, of course, but more importantly it keeps things out of the landfill. You've heard the old adage: "one person's trash is another's treasure". Not only does it make sense, it is true.

When you are cleaning out the basement, be sure to recycle metal items and cardboard. Dispose of paint properly. Dry out latex paint before throwing away. Save oil-based paint for hazardous waste day. Batteries and CFL bulbs need to be properly disposed of, too. Rather than just throwing things out that you are unsure of, save them for hazardous waste. If they are not hazardous, you can dispose of them at that time.

What do you do when you just have too much "stuff"? We often put items that we no longer use out on the roadside with a "free" sign on them. We've gotten

rid of old furniture, lamps, heaters and lawnmowers this way. Nothing has stayed on the lawn for very long. Our shortest time was one minute and 30 seconds from the time we put things outside. The longest was ten hours. Be sure that things still work when you put them for "free". Nobody wants to pick up someone else's garbage.

You can donate used clothing to a charitable organization. Many battered women's shelters take good used bedding. Tired sheets and towels make great cloths for the animal shelter. Many local organizations run sneaker drives.

The more you think of reusing and recycling, the easier it becomes. Like most other things, it is a habit to get into. Only *this* habit is good for you *and* the environment! Plus, it

makes a difference.

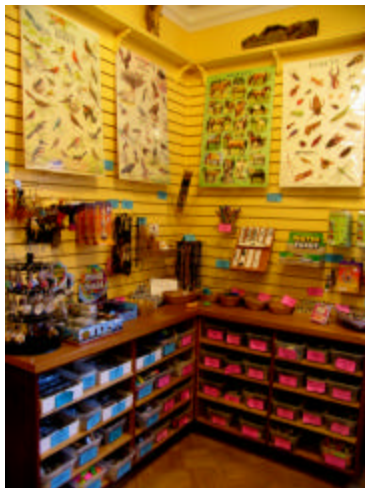




We've Got the Power!: Solar Panels on Our Activity Shed, Photo Credit: Gerri Griswold

LIVING CLEAN LIVING GREEN: CLIMATE ACTION WORKSHOP
WHITE MEMORIAL CONSERVATION CENTER

Learn about alternative sources of energy as Carolyn Humphreys, Community Outreach Coordinator for *Sunlight Solar Energy, Inc.* discusses the solar panel installation on our Activity Shed and answers your questions about clean energy. Russ Wheeler, The Compost King, talks home composting and Lisa Turoczi, owner of *Earth Tones Nursery* in Woodbury preaches the gospel of native plantings. More surprises to come as this first time event continues to evolve. Help your family live a cleaner, greener lifestyle. Refreshments served! The workshop is free but you must pre-register for individual talks or for the entire seminar. **Saturday, August 29, 2009 from 12:00 P.M. – 3:00 P.M.** Call 860-567-0857 to sign up!



**Have You Shopped at the
White Memorial Nature Store
Lately?**

Our gift shop is simply brimming with unique treasures for children and adults. Choose from a huge selection of tiny trifles certain to bring a smile to any child's face or why not treat yourself to a lovely gift of handmade soap, maple syrup, jewelry, music, pottery & more from our Connecticut Corner?



We Now Accept Visa, Master Card, and Discover



- Bantam Fuel * Winvian * C&L Plumbing
- First National Bank of Litchfield
- Litchfield Hills Audubon Society * Woods Pit BBQ
- Litchfield Ford * Litchfield Bancorp
- Ericson Insurance Services, LLC
- S.H. Smith & Company * Webster Bank
- Towne & Aurell, Inc. * True Value Hardware of Litchfield
- Torrington Savings Bank



Some keep the Sabbath going to Church,
 I keep it staying at Home -
 With a bobolink for a Chorister,
 And an Orchard, for a Dome.

Emily Dickinson

Summer Calendar of Events

For more information on any of our programs, please call us at 860-567-0857

JUNE

29 - July 5 **Museum Kids Free Week***
In Memory of Louise W. Willson

JULY

3 **INDEPENDENCE DAY**
Museum Closed



4 **Bats: Earth's Allies**



Celebrate your independence from night flying insects as you explore the world of bats with Gerri Griswold and her Big Brown Bat, Theo. Pre-registration required
10:00 A.M., A.B. Ceder Room.
Ages 8 to Adult.

Wildlife Tracking Club

Primitive skills and nature awareness instructor, Andrew Dobos, leads you on a trek through forests and wetlands. **July 4** and **August 1**.
Meet in front of the Museum. 10:00 A.M.

11 **Evening at Little Pond**

Wildlife Biologist Dave Rosgen leads a walk around this ethereal place in search of herons, frogs, beavers, and more. Ages 8 and up. Meet at the A.B. Ceder Room. 5:30 P.M.



6 - 12 **Museum Kids Free Week***

Courtesy of the J. Denis O'Toole Family honoring Helen Ryan Donnelly

Mattatuck Astronomical Society

will be holding public observing sessions at the observatory behind the WMCC Museum on the following dates: July 11 & 25, August 8 & 22 and September 12 & 26
Arrive just before sundown!

For information visit their website
www.mastransit.org



12 **Kayaking with Robyn Dinda**

Explore Bantam River Outlet. Bring a lunch!
Meet in the Museum parking lot at 10:00 A.M.
For more information call Robyn at 860-567-0738

18 **Meteorites with Jon Wallace**

Learn all about celestial fallout. Jon will display and discuss his collection of meteorites amassed over two decades. Fun for all ages.
Pre-register by calling 860-567-0857.
2:00 P.M., A.B. Ceder Room

* Free admission to Children ages 12 and under when accompanied by an adult

25 **Adult Workshop: BAT HOUSES!**
see page 7 for details

31 **Kayak Odysseys in the South Pacific**
Adventurer and photographer, Horst Antosch shares photographs and tales of his three month long sojourn.
Refreshments served!
7:00 P.M., A.B. Ceder Room

AUGUST

1 **Things That Go Bump in the Night**



Wildlife Biologist Dave Rosgen takes you on a night walk where listening plays a major role in identifying the cacophony of sounds uttered by a variety of insects, amphibians, and maybe an owl or two. Meet in front of the A.B. Ceder Room.. 6:30 P.M.

3 - 9 **Museum Kids Free Week***

Courtesy of Joan and Jack Benham honoring Brianna R. Parcell

8 **Iceland: Your Inner Viking is Calling**

Gerri Griswold leads you on a journey 66 degrees north, five hours from Boston, and what will seem like light years away.
2:00 P.M., A.B. Ceder Room

15 **Beauty and the Beast: Invasive Aquatic Plants of the Bantam River**

Kayak the Bantam River with Dr. George Knockelein and Recreationist Dave Faber while learning about non-native plants which are clogging this beautiful waterway.

15 **Surely You Jest! Make a Magic Jester Stick with Artist and Puppeteer**

Robin McCahill
See page 7 for details

17 - 23 **Museum Kids Free Week***

Courtesy of Tara and Arthur Diedrick honoring Ann and Arthur Diedrick

22 **Tree Identification Walk**

White Memorial Foundation Forest Superintendent Lukas Hyder leads the way. Meet in the Museum parking lot. 10:00 A.M.



23 **Adult Workshop**
Survey of New England Ferns
See page 7 for details

29 **Living Clean Living Green**
Climate Action Workshop
Sunlight Solar Energy, Inc.,
Russ Wheeler, The Compost King
Earth Tones Nursery
See page 3 for details

SEPTEMBER

2 **Here Kitty Kitty!**



There's a Bobcat in My Yard!

CT DEP Biologist Paul Rego introduces you to your new neighbor! 6:30 P.M.,
A.B. Ceder Room

5 **Ten Tips to Successful Wildlife Photographs with Gary Melnysyn**
See page 7 for details

7 **LABOR DAY**
Museum Closed



12 **Radio Astronomy with Jon Wallace**

It's *International Year of Astronomy* and Jon comes armed with a portable radio telescope. Radio telescopes can also be linked with solar observing (pray for clear weather!) 2:00 P.M., A.B. Ceder Room

13 **Kayaking with Robyn Dinda**

Kayak the inlet of Bantam River and watch the beavers! Meet in the Museum parking lot at 4:00 P.M. Bring dinner! For more information call Robyn at 860-567-0738

19 **Hawk Watch and Other Fall Migrants**

Wildlife Biologist Dave Rosgen leads the way. Meet in the Museum parking lot. 2:00 P.M.

14 - 20 **Museum Kids Free Week***

22 **Go Fish! CT DEP Fishing Class**

This three day fresh water fishing program is scheduled for September 22, 24, & October 1 with a field trip October 3. See page 6 for details



September 26, 2009
28th Annual
Family Nature Day
Wingmasters,
Riverside Reptiles,
Mortal Beasts and Deities,
Wildman Steve Brill,
Todd Stoughton
and the Still Hillbillies
See back page for information!

28—Oct. 4 **Museum Kids Free Week ***
Courtesy of Joan and Jack Benham honoring Wesley D. Parcell

OCTOBER

3 **"May and Me": Story Hike Up Apple Hill**
Take a beautiful October afternoon, add a stroll to the top of Apple Hill and stir in the story of Alain and May White. When you reach the top, savor the reward! Call 860-567-0857 to pre-register 2:00 P.M.

Community Service **at White Memorial**

by Lukas Hyder, WMF
Forest Superintendent

Thanks to the help from our volunteers, non-native invasive plants such as honeysuckle, bittersweet, multiflora rose, and autumn olive around the White Memorial main area are steadily decreasing.

The Wamogo VoAg students have been regulars at helping us control invasive plants; once a month they send a large crew over and spend a long morning doing varied jobs. Some help in the museum with general cleaning, animal care, and gift shop tasks such as pricing inventory, and others with pulling, cutting, uprooting, and chopping out invasives. They have come steadily. Cold, rain, and heat do not deter them.

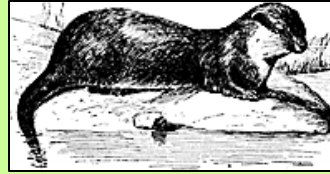
On two Saturdays in April a group of National Honor Society students from Crosby High School led by Kim Picard uprooted and cut honeysuckle and bittersweet from the wood line adjacent to the Mott-Van Winkle area.

On April 17th Washington Montessori sent nine middle school students plus leaders. Their task was removing invasives from the Ongley Pond trail area. The smaller the student, the bigger the plant they tackled.

Then one week later on April 23rd, a large group of middle school students from Hamden Hall Country Day School spent a couple of hours pulling Japanese barberries from the woods in the vicinity of the Lake Trail. The thorns did not deter their enthusiasm.

Finally on April 25th, the Boy Scouts from Troop 102 of Naugatuck spent many hours at the Windmill Hill campground cleaning up the campsites of leaves, sticks and trash, as well as cleaning out the ditches.

Our thanks go out to all these groups and individuals for their great help with these difficult tasks.



Volunteer Spotlight: Carol and Henry Perrault

Photo and Story by Gerri Griswold, Director of Development

Life for Carol and Henry Perrault is never experienced in slow motion. This extremely active couple (Carol : “Henry has a Type A plus plus plus personality”) manages to balance career with volunteerism, watercolor class, cooking, letterboxing, gardening, Master Wildlife Conservation, classical guitar lessons, crocheting, Litchfield Hills Audubon Society, reading, and don’t forget the yoga classes they take to unwind from it all.

Henry’s introduction to White Memorial came fifty years ago as a Boy Scout, when he and three cronies meandered the Blue Trail from Naugatuck State Forest to Black Rock and continued on for 24 miles until it started getting dark. Not knowing where they were and definitely needing a ride home, the lads approached a house, knocked on the door, and asked the gentleman who answered if they could use his telephone. The house was Whitehall. The man was Art Ceder.

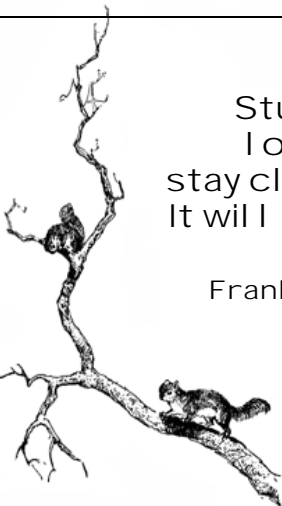
Henry met Carol at The University of Connecticut Waterbury Branch where he studied chemical engineering (retired from Pratt and Whitney where he was a Fire Protection Engineer) and she, allied health. Their friendship blossomed into romance over time and it was at a college picnic at Kent Falls (another WM connection) that Henry DECIDED Carol would be his wife. How could she resist?

Years later, their mutual interest in nature and exploration led them back to Litchfield with their children. Carol developed an interest in bird watching. The late Virginia Peterson, of Litchfield Hills Audubon Society, nurtured Carol’s curiosity with bird walks, many of which were staged at White Memorial. Years later, Henry would serve as President of LHAS. A mutual love of butterflies and dragonflies and time spent on WMF property lead to the Perrault’s becoming members of WMCC.

Henry and Carol are Master Wildlife Conservationists for the Connecticut DEP. Their unquenchable thirst for gaining and sharing knowledge about the natural world has led them to volunteer teaching pond programs and leading nature walks at WMCC. They have taken part in Research Director James Fischer’s volunteer workshops for Vernal Pool Monitoring, Mammal Tracking, and the Deer Population Survey. About Fischer Henry says, “He is a marketing genius...making YOU pay for the privilege of doing work for him for nothing!”. About volunteering at WMCC Carol says, “We get so much out of it. It is so fulfilling.”

Henry and Carol, our lives are deeply enriched by your generosity in sharing precious time and your vast wealth of knowledge.

Editor’s Note: We are thrilled to announce that Henry Perrault has accepted an invitation to sit on the WMCC Board of Directors.



Study nature,
Love nature,
stay close to nature.
It will never fail you.

Frank Lloyd Wright

SUMMER FUN FOR KIDS
Some Camp Classes Have Openings!

Summer is here and with it comes a parent's greatest fear. Question: How do we keep the kids entertained and enthused during summer vacation and do so on a budget? Answer: WMCC Education Director Jeff Greenwood to the rescue!

We have plenty of room in our Wee Discoverers programs for children ages four and five. For kids entering grades one and two there are spaces in all six weeks of Nature Adventurers.

In Natural History Explorers for those entering grades three and four, only one week (Explorers I, Session I) has room. For children entering fifth and sixth grades (Explorers II, Sessions I & II) there are openings both weeks. Finally, there are still some empty spots in Explorers IV for children entering fourth, fifth, and sixth grades (one week program).



WHITE MEMORIAL CONSERVATION CENTER, INC.
ANNUAL MEETING MINUTES
MAY 1, 2009

The Annual Meeting of the White Memorial Conservation Center, Inc. was called to order by President Diedrick at 3:31 P.M., on May 1, 2009, at the White Memorial Foundation office.

The minutes of the May 2, 2008 Annual Meeting were approved upon motion of Mr. Plunkett and second by Mr. Ching.

Mr. Samponaro presented the report of the Nominating Committee. For Members of the Board of Directors for terms of three years expiring in 2012: Gerald Gault and Henry Perrault. For Members of the Education and Activities Committee for terms of three years expiring in 2012. Sue Addison, Melissa

Brutting, Carol Williams, Peni Clark, John Markelon, and Guy Weik. Upon motion of Mr. Ching and second by Mr. Booth the Secretary was authorized to cast one ballot for the slate as presented.

Center staff Gerri Griswold, James Fischer and Jeffrey Greenwood reported on accomplishments for 2008 and plans for 2009. Ms. Griswold also reported that the new White Memorial website is complete and went online this afternoon.

As there was no further business, upon motion of Mr. Victor and second by Mr. Ching, the meeting was adjourned at 4:08 P.M.

SOMETHING FISHY
THE CT DEP FISHING CLASS
RETURNS TO WMCC

The Department of Environmental Protection's (DEP), Connecticut Aquatic Resources Education (CARE) program, is returning to White Memorial.

The 3 day program will take place on September 22, 24 and October 1 from 6:00 P.M. until 8:00 P.M. in the A.B. Ceder Room at The White Memorial Conservation Center. A fishing field trip is planned for October 3.

The program, developed in 1986 by the DEP Bureau of Fisheries, has introduced thousands of novice anglers throughout the state to the quiet pleasures and the exciting thrills of freshwater fishing. Classes cover many diverse topics including how and where fish live, fishing laws and regulations, fish identification, fishing tackle and techniques, how to cast, sportsmanship, safety, and how to fillet and cook your catch.

The fishing program is conducted by certified DEP CARE instructors. The class fee is \$13, which includes a fishing rod and reel for students to take home. Classes are open to everyone. Students under 9 years of age must be accompanied by an adult. All required equipment will be provided. Pre-registration and pre-payment is required.

For more information call 860-567-0857.

CT DEP C.A.R.E. FISHING PROGRAM
September 22, 24, October 1 6:00 P.M. - 8:00 P.M.

Name _____ Phone _____

Address _____ City _____ State _____

Program Fee of \$13 includes a rod and reel to take home
Enclosed is my check for \$13 Payable to WMCC
P.O. Box 368, Litchfield, CT 06759

BEAUTY AND THE BEAST
INVASIVE AQUATIC PLANTS
OF THE BANTAM RIVER

On August 15 you are invited to attend a most unique program. With the Bantam River as your laboratory, and invasive aquatic plant expert, Dr. George Knockelein and Recreationist, Dave Faber, owner of *Connecticut Outdoors, LLC*, as your guides, you will get up-close and personal with the numerous non-native plant species which are clogging this beautiful waterway and impacting recreationists and the entire ecosystem of the river.

You may bring your own boat or rent one from *Connecticut Outdoors*. The \$38.00 rental fee includes paddle and life vest along with expert advice from Faber. This class is limited to fifteen participants. Pre-registration and pre-payment for kayak rental are required.

Meet at the boat launch on Whites Woods Road at 2:00 P.M.. For more information call 860-567-0857.



BEAUTY AND THE BEAST: INVASIVE AQUATIC PLANTS
August 15, 2009, 2:00 P.M.

Name _____ Phone _____

Address _____ City _____ State _____

Kayak Rental Fee \$38 includes paddle and life vest
Enclosed is my check for \$38 Payable to: CT Outdoors, LLC
Mail to: WMCC P.O. Box 368, Litchfield, CT 06759

Adult Nature Study Workshops and Saturday Workshops: Summer 2009



Bat House Workshop

July 25, 2009 1:00 P.M. until 8:00 P.M. with Dinner!

Registration Fee: Members: \$15.00 Non-Members: \$20.00 Class size is limited. Register early!

You have probably heard about the most recent problem that our bat population has been experiencing, White Nose Syndrome. What can you do about this that will still help bats on the property and in our own neighborhood? Build and install a bat house! Geoff Krukar, CT DEP Wildlife Division's very own "Bat Guy", will lead this hands-on workshop that introduces you to building and installing a bat house which is attractive to bats (they don't just sleep in any ole' place). The bat house you build will be installed on the property and will need to be monitored. The evening will be capped off with dinner while counting bats as they leave one of our local roosts. You'll learn how to help these night hunters of biting insects and how your efforts can be useful for this region's conservation efforts. The bat house you help build can be purchased for \$50, the cost of materials. Class meets in the A.B. Ceder Room.



Surely You Jest! Make a Magic Jester Stick with Artist and Puppeteer Robin McCahill

August 15, 2009 1:00 P.M. until 4:00 P.M.

Registration Fee: Members: \$25.00 Non Members: \$30.00 Ages 8 and up. Class size is limited. Register early!

Artist and Puppeteer Robin McCahill of "Snow Queen" fame, returns to White Memorial with a whimsical workshop suitable for most ages (8 and up). Make your own magic jester stick! Sculpt your favorite animal head using the needle felting technique. Attach the head to a painted stick embellished with ribbons, strings, and things. Poof! You will instantly be transformed into the court jester of your own kingdom! Make magic with Robin! All materials included in fee. Class meets in the A.B. Ceder Room.



Survey of New England Ferns

August 23, 2009 10:00 A.M. until 4:30 P.M.

Registration Fee: Members: \$66.00 Non-Members \$78.00

Don Lubin and Ray Abair, fern enthusiasts (<http://nefern.info>), will review our fern flora, the 68 species that are native to New England. After an introductory discussion, we will display photographs and frond silhouettes and explain field identification. The workshop concludes with a tour of the native ferns in the White Memorial Foundation's wetlands, fields, old growth forest, and upland hardwood forests. Dress for the weather. Wear comfortable, sturdy shoes, and bring a lunch. Don and Ray have given this workshop annually since 1999, but never before in Connecticut! Geared to people with some experience and co-sponsored with New England Wild Flower Society. Class meets in the A. B. Ceder Room.



Ten Tips to Successful Wildlife Photographs with Gary Melnysyn

September 5, 2009 1:00 P.M. until 3:00 P.M.

Registration Fee: Members: \$10.00 Non Members: \$15.00 Ages 16 and up

Avid outdoorsman, conservationist, and professional wildlife photographer, Gary Melnysyn returns to WMCC with his top ten tips to successful wildlife photography. Melnysyn's photos have appeared in *National Geographic*, *Nature Photographers Magazine* and *Outdoor Photographer Magazine*. His workshop will focus on the minimum equipment one needs to get the job done. You will learn about animal behavior and what you need to observe in order to capture that award winning photo! Copies of Gary's book, *Wild America - Images, Musings and More* will be available for purchase. Class meets in the A.B. Ceder Room.

Clip & Mail

Bat House Workshop..... Member: \$15.00 Non Member: \$20.00
 Magic Jester Stick Felting Workshop..... Member: \$25.00 Non Member: \$30.00
 Survey of New England Ferns..... Member: \$66.00 Non Member: \$78.00
 Ten Tips/Wildlife Photography..... Member: \$10.00 Non Member: \$15.00

Name _____

Address _____

City _____ State _____ Zip _____

Phone _____ e-mail _____


Please circle one: member non-member

Payment enclosed:

Program fee: \$ _____ Membership fee: \$ _____ Total \$ _____

Make check payable to White Memorial Conservation Center and mail to:
White Memorial, P.O. Box 368, Litchfield CT 06759.

Become a member of the White Memorial Conservation Center and take advantage of the member discount, along with free admission to the Nature Museum, a discount in the Gift Shop, and receipt of the quarterly newsletter and calendar of events. Your tax-deductible fee will help sponsor programs like these. A family membership is \$45.00 per year and individual is \$30.00. CEUs available



For more information call 860-567-0857
www.whitememorialcc.org

28th ANNUAL FAMILY NATURE DAY
SATURDAY SEPTEMBER 26, 2009
11:00 AM - 5:00 P.M.
FEATURING



Wingmasters



Todd Stoughton & the Still Hill Billies



Mortal beasts & Deities

PLUS!!!!!!!

Kayak Raffle

Guided Nature Walks

Nature crafts for kids

Booths and Exhibits

Book & Bake Sale

Craft Fair

Food

Horse Drawn Wagon Rides



William Stebbins



Riverside Reptiles

What's Inside This Edition of **SANCTUARY**

MAKE A DIFFERENCE.....2
 CLIMATE ACTION WORKSHOP...3
 CALENDAR OF EVENTS.....4
 VOLUNTEER SPOTLIGHT.....5
 WORKSHOPS.....6 & 7

Have you visited our beautifully refurbished website?



Sign up to receive our weekly email newsletter
THE HABITATTLER



Amazon.com donates to WMCC each time you shop through our website.



whitememorialcc.org

Non-Profit Organization
 U.S. POSTAGE
 PAID
 LITCHFIELD, CT 06759
 PERMIT NO. 10

The White Memorial Conservation Center
 P.O. Box 368
 Litchfield, CT 06759